



Southern University of Science and Technology (SUSTech) is a research-oriented public university established in 2010 in Shenzhen, China's innovation center. It is widely regarded as a pioneer in moving China's higher education reform forward to match the country's ever-growing role in the international arena.



About SUSTech

Southern University of Science and Technology

Mission

Service Mission

- Contribute to the innovative development of China.
- Boost the economic and societal progress of Guangdong.
- Help Shenzhen become a modern, international and innovative city.

Reform Mission

- Pilot higher education reform.
- Become a testbed for excellent research university practice.
- Develop a modern Chinese university system.

Educational Goals

- Prepare graduates to be innovative, versatile leaders on the global stage.
- Develop into a world-class research university.
- Conduct high-quality, socially-impactful research.
- Become an engine for sustainable development in the Greater Bay Area

Milestones

- 1st** in mainland China for Citations (THE World University Rankings 2022)
- 2nd** in the world among small universities
- 9th** in mainland China overall (THE World University Rankings 2022)
- 41st** in the world (Nature Index 2021 Annual Table)
- Best** mainland China university under 50 years old (THE Young Universities 2021, QS Top 50 Under 50 2021)
- International collaboration relative to country** (US NEWS 2020)
- Faculty-student ratio** (QS World 2022)
- Percentage of teaching staff with PhD** (QS Asia 2021)

Location

Situated in the booming Greater Bay Area, Shenzhen is an international hub of innovation



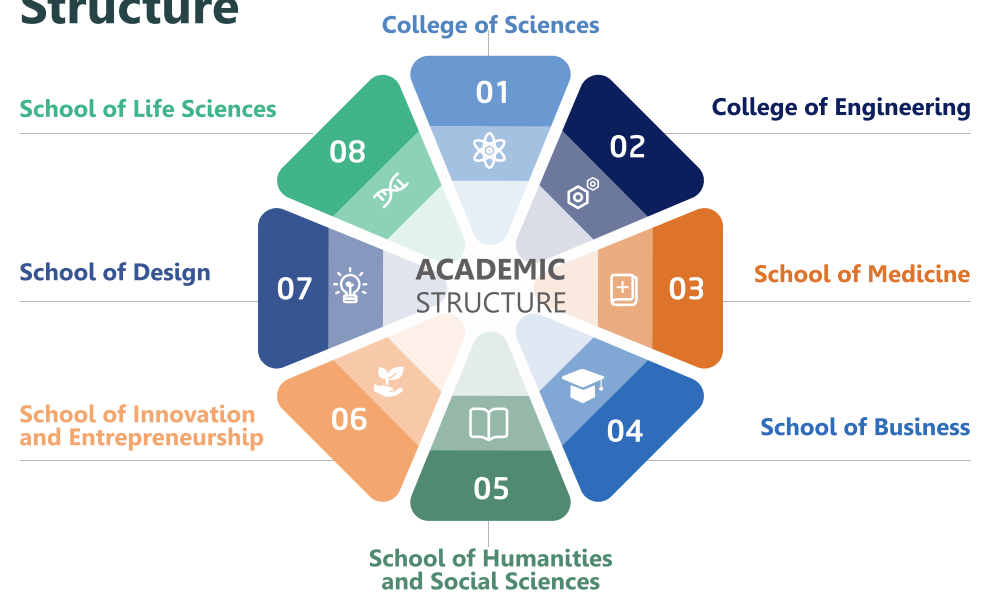
- USD417bn** GDP (2022)
- No.20** World metropolitan economy (2017)
- No.1** Chinese city for general competitiveness (2019)
- USD13bn** in R&D investment (2017)

Shenzhen

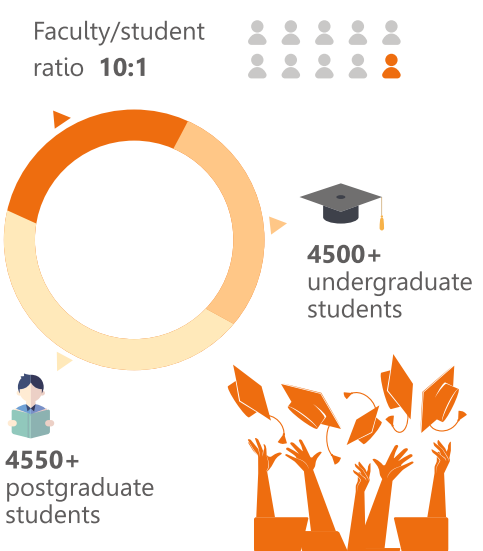
- No.2** on Lonely Planet's best cities to visit (2019)
- Unesco City of Design (2008)
- 70,000+** technology companies (2020)



Organizational Structure



Student Body



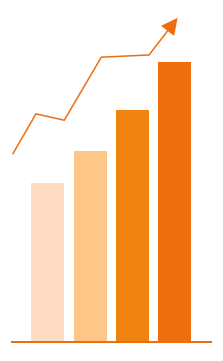
Faculty Data

- 60%** are from the top 100 universities in the world
- 1250+** Faculty members
- 95%** have international working experience
- 100%** hold PhD degrees
- 49** National academies members



World Rankings

Essential Science Indicators (ESI) 2021: chemistry, materials science, engineering, clinical medicine environment/ecology - **top 1%** in the world



- Nature Index 2021 Rising Stars: **1st** amongst the world's fastest-rising universities Ten
- Times Higher Education World University Rankings 2022: 162 in the world, **9th in Mainland China**

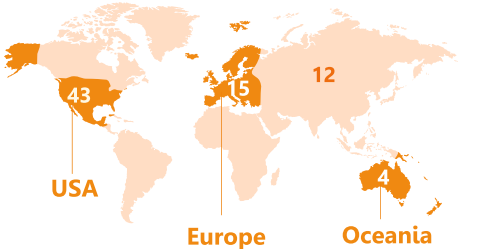
Global Engagement

International Faculty, Visiting Scholars and Postdocs:

- 82** International students from 20 different countries
- 148** International faculty members
- 40** International postdocs
- 74** International visiting scholars

International Partnerships

- 100+** agreements signed with partner universities
- 100+** study abroad programs
- Exchange Programs** Funding support available



Study Abroad and Exchange Partners



- MIT Semester Study Program
- University of California, Berkeley International Study Program
- University of Pennsylvania International Guest Student Program
- University of Michigan Dual Degree Program

Center for International Students and Scholars

- Newly established center providing holistic support to the small but ever-growing international community at SUSTech:
- Visa and residence permit support
 - Orientation and adaptation workshops
 - Cultural activities to promote integration of international students and scholars into campus life



Research Centers and Institutes

- Shenzhen Institute of Quantum Science and Engineering
- Cryo-Electron Microscopy Research and Innovation Centre
- Third Generation Semiconductor Research Institute
- Materials Genome Research Institute
- Materials Characterization and Preparation Center
- Southern Aerospace Research Institute
- Brain Analysis and Brain Simulation Institute
- Institute of Artificial Intelligence
- International Centre for Intelligent Manufacturing Innovation
- Robotics and Automation Research Institute
- Big Data Innovation Center
- Intelligent Unmanned Aerial Vehicle Laboratory
- Deep Earth Exploration Platform
- Sifakis Research Institute of Trustworthy Autonomous Systems



Research Innovation Entrepreneurship



Residential Colleges

Six diverse college cultures aim to help students grow emotionally and socially, while providing them with a full range of extracurricular learning and life activities.



Undergraduate Education

1st/2nd year

General Education undertaken for first 2 years

Required courses:

Mathematics, Physics, Chemistry, Biology, Computer Science, English

3rd/4th year

Elective courses
Major-specific courses
Graduate designs and research projects

1617 total courses offered in 2019/2020
1029 undergraduate
588 postgraduate



Internationalized curriculum matched with world's top universities

English as instructional language for all required courses

Integration of liberal arts and specific STEM courses

Student-centered, problem-based approach to entrepreneurship training and study of innovation

Emphasis on lab practice and internships

Early participation in research supported through faculty advisor system

Lab work and experiential learning form core facets of the SUSTech experience from the 1st year onwards



Undergraduate Programs

Department/School	Program
Department of Physics	Physics
	Applied Physics
Department of Chemistry	Chemistry
Department of Biology	Bioinformatics
	Biological Sciences
Department of Biomedical Engineering	Biomedical Engineering
	Intelligent Medical Engineering
Department of Electrical and Electronic Engineering	Optoelectronic Information Science and Engineering
	Communication Engineering
	Information Engineering
School of Microelectronics (National Exemplary Institute)	Microelectronics Science and Engineering
	Automation

Department/School	Program
Department of Materials Science and Engineering	Materials Science and Engineering
	Electronic and Photonic Materials and Devices
Department of Finance	Finance
	Financial Engineering
School of Mathematics	Mathematics and Applied Mathematics
Department of Statistics and Data Science	Statistics
Department of Computer Science and Engineering	Computer Science and Technology
	Intelligence Science and Technology
School of Environmental Science and Engineering	Environmental Science and Engineering
	Hydrology and Water Resources Engineering
Department of Mechanics and Aerospace Engineering	Theoretical and Applied Mechanics
	Aerospace Engineering

Department/School	Program
Department of Mechanical and Energy Engineering	Mechanical Engineering
	Robotics Engineering
	Science and Engineering for Renewables
	Automation
Department of Ocean Science and Engineering	Oceanography
	Offshore Engineering and Technology
Department of Earth and Space Sciences	Geophysics
School of Medicine	Intelligent Medical Engineering
	Biomedical Science
School of Business	Big Data Management and Application
School of Design	Industrial Design
School of System Design and Intelligent Manufacturing	Industrial Design

International Student Scholarship

Full scholarship available for international undergraduate students equivalent to **USD9000-10,000** per year.

This covers tuition fees, accommodation, insurance and living expenses during the four years of college study on the condition that satisfactory academic standing is maintained.



Costs for Reference

Tuition	4,600 USD/year*
Dorm	200 USD/year*
Insurance	100 USD/year*
Residence permit	100 USD/year*
Health check	100 USD*
Food, books and miscellaneous	230-300 USD/month
Total	7,900-8,700 USD/year

(Items marked with a * are all covered by the full scholarship. Monthly stipend of USD400)

Admission Requirements

- Age 18 or above by August 20th 2023
- High school diploma and high school transcript
- English proficiency IETLS(6.0)/TOFLE(75)/Duolingo(95)
- 2 recommendation letters
- Academically prepared for rigorous STEM study across Biology, Chemistry, Physics, and Maths in first two years of study

Apply here through our online admissions portal:
<https://sustech.at0086.cn/StuApplication>

Admissions Process

- Step 1: Documents Gathering
- Step 2: Online Application
- Step 3: Online Test
- Step 4: Online Interview
- Step 5: Offer Issuing
- Step 6: Visa Application
- Step 7: Enrollment

Deadlines

1st Round	Late Dec 2022
2nd Round	Late March 2023
3rd Round	1st May 2023

SUSTechSZ
www.sustech.edu.cn/en/

Campus

The SUSTech campus sits on a scenic stretch of land with creeks winding through the lychee tree-lined hills which dot the landscape.

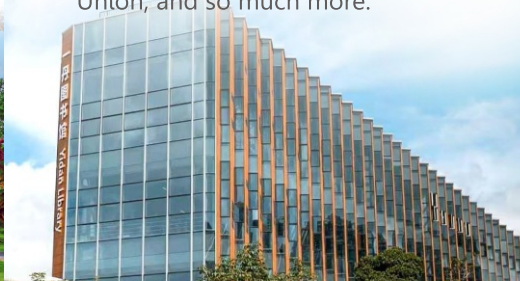
The tranquil, natural environment is complimented by the modern architecture of the university buildings.



Libraries

The Lynn Library is our iconic, award-winning architectural centrepiece and the hub of student self-learning at SUSTech.

The newly-opened Yi Dan Library comprises part of the SUSTech Center, the heart of campus and home to cafeterias, the Student Union, and so much more.



Sports

On campus, we have state-of-the-art sports facilities, including:

- Olympic size outdoor swimming pool
- 1 full-size and 2 5-a-side football pitches
- 12 basketball courts
- 8 tennis courts
- Indoor badminton and volleyball courts
- Baseball pitch



Accommodation

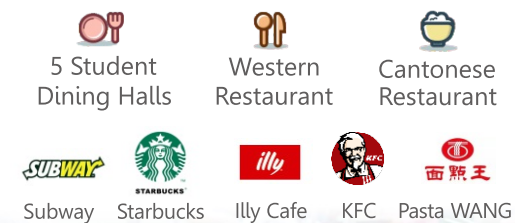
Students are housed in our brand-new on-campus dormitories:

- Opened Sept. 2019
- 4 students per room
- Communal spaces on each floor
- Shared bathroom facilities
- Latest security technology employed for student safety
- Views across the lush Tanglang hills



Food

A variety of on-campus dining options provide a collection of different cuisines from all over China as well as western choices:



Activities

Campus is a hive of activity year round:

- New Year Concert
- City Tours
- Visits to Makerspaces
- Mid-Autumn Day
- Spring Festival
- Dragon Boat Festival
- International Food Festival
- Full Residential College Sports Program
- Khmer New Year Party
- Language Labs

